

# TruSpec<sup>®</sup>

Micro Elemental Series



**LECO**  
EMPOWERING RESULTS

# TruSpec<sup>®</sup> Micro Elemental Series

## Designed to meet your true specifications for optimal performance.

Built on a collaboration of customer input and sound engineering, the *TruSpec* Micro is available in elemental configurations including CHN and CHNS, with the *TruSpec* Micro Oxygen Add-on Module compatible with either configuration.

Incorporating advanced hardware and software technology and focusing on improving instrument performance and efficiency, the *TruSpec* Micro is designed to provide you with fast and accurate elemental determination of a wide variety of solid or liquid samples in the fields of pharmaceuticals, polymers, chemicals, and petrochemicals.

The unique design and detection scheme of the *TruSpec* Micro utilises a combination of flow-through carrier gas and individual, highly selective infrared (IR) and thermal conductivity detectors resulting in simultaneous determination of CHNS in less than four minutes. The *TruSpec* Micro Oxygen Module utilises an independent high-temperature (1,300 °C) pyrolysis system providing an oxygen result in two minutes.



## User-Friendly Operating Software

- Simplified data handling with convenient storage and customisable reporting and data exporting capabilities
- User-definable fields for automatic calculations using custom formulas
- User-definable counters to aid in the tracking of routine maintenance procedures and reagents
- User-definable gas conservation mode helps avoid wasting costly gas
- Pause / Delayed Start allows automatic start-up, equilibration, and standardisation at any time selected by the user; allows the system to be ready and in wait at any time the user defines
- Expanded real-time service diagnostics
  - Ambient charts of instrument temperatures, pressures, and detector signal
  - Manual control of solenoids and switches
  - Automated leak and systems checks
  - Network and communications diagnostics
- Supports compliance to FDA regulations 21 CFR Part 11 for a closed analytical system





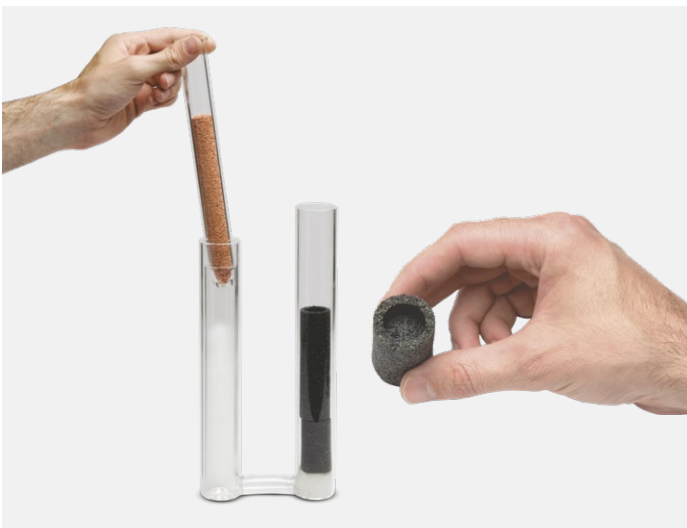
### Integrated Autoloader and Loading Head

- Reliable, gravity-fed automation (30 to 120 positions)
- Integrated electronics, pneumatics, and purging chamber for greater reliability, faster removal, and efficient atmospheric purging



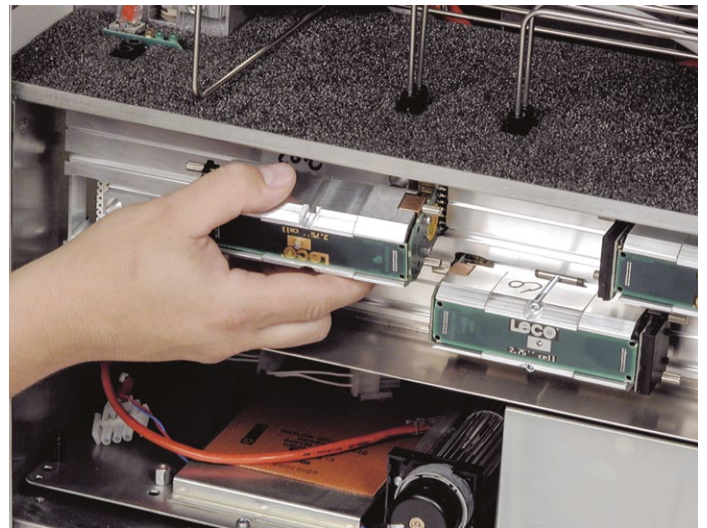
### Combustion Tube

- Durable, U-shaped quartz combustion tube withstands temperatures up to 1,100 °C
- Sample oxidation and ash collection take place in primary side; reduction of combustion gases using a copper catalyst takes place in secondary side
- Each tube side independently temperature controlled



### Quick-Change Top-Loading Reagents

- Reagents contained within the reticulated crucibles for fast removal
- Removable quartz sleeve enables the copper catalyst to be changed without cooling the furnace



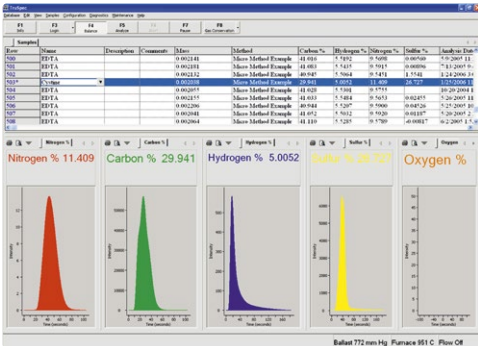
### Optimised Elemental IR Detectors

- Selective detectors with wide dynamic ranges
- Minimizes analysis time and expands sample throughput

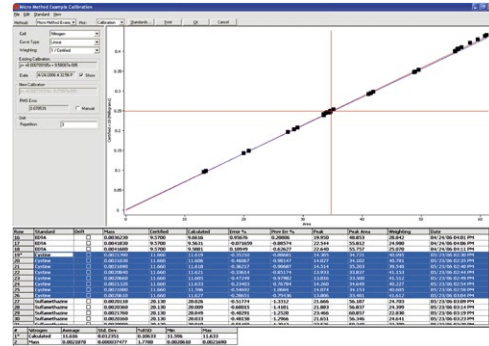
# Easy-To-Use Operating Software

With virtually unlimited storage space and compatibility with various Laboratory Information Management Systems (LIMS), this software is designed for seamless interaction with any operator or customer environment.

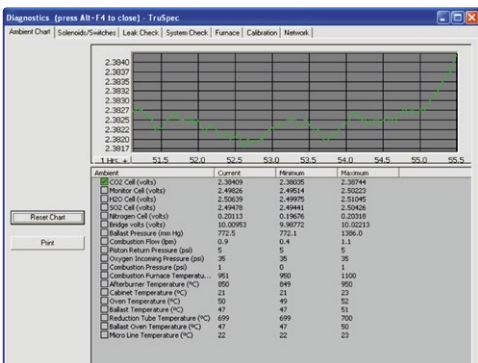
A convenient on-board help manual allows quick access to information without leaving the instrument. The TruSpec® Micro software also supports compliance to FDA regulations 21 CFR Part 11 for a closed analytical system.



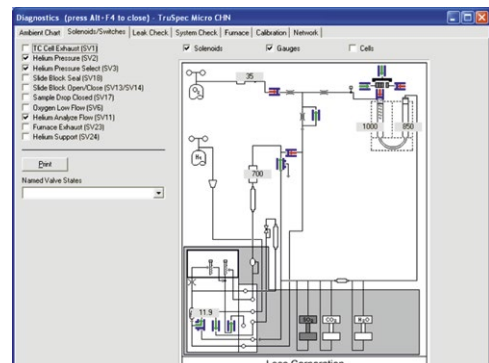
Seamlessly manage data and graphs



Perform calibrations and drift corrections



Monitor instrument component readings



Expanded interactive diagnostic screens to aid in troubleshooting and improve serviceability

## LECO – Your Source for Total Analytical Solutions

### AC Series Isoperibol Calorimeters

- Accurate calorific measurements
- Ergonomic water-measuring/combustion vessel-filling station
- Analysis time in as little as five minutes
- Meets or exceeds ASTM and DIN requirements
- 6,000 to 15,000 Btu/lb for 1 gram sample



### TGA801 Thermogravimetric

- Determines moisture/ash or weight-loss in various organic samples
- Expanded temperature control (up to 1,000 °C) with variable atmospheres and ramp rates
- Pneumatic carousel mechanism and ergonomic design increases sample throughput, decreases downtime, and improves serviceability
- Complies with AOAC, AACC, and ASTM-approved methodology



ISO-9001:2015 Q-994 | LECO is a registered trademark of LECO Corporation.

**LECO Corporation**  
 3000 Lakeview Avenue | St. Joseph, MI 49085  
 Phone: 269-985-5496  
 info@leco.com | www.leco.com

**LECO Europe**  
 eu.leco.com

