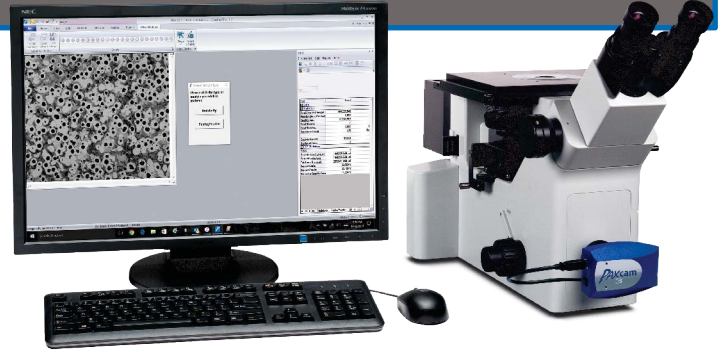


IA44

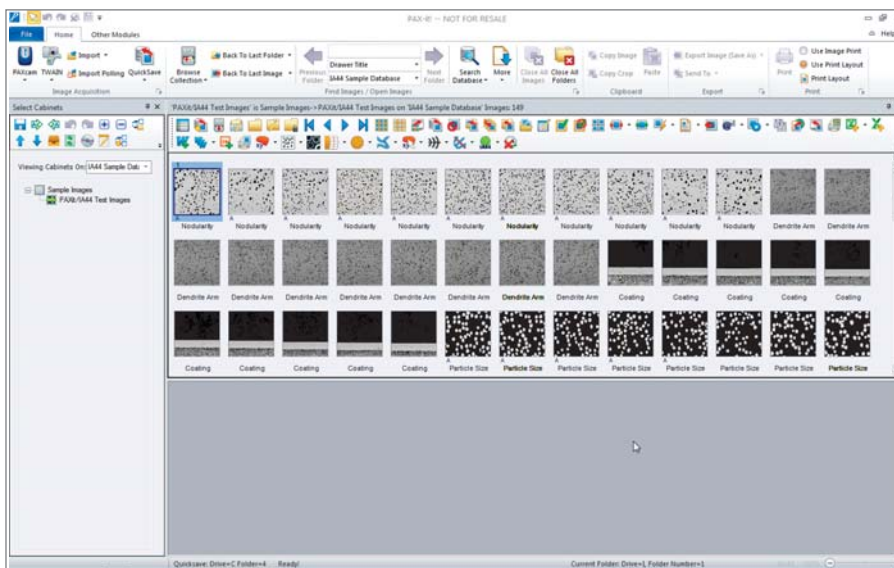
Image Analysis/Management System

LECO's versatile IA44 Image Analysis/Management System allows you to easily transform raw data into valuable information that can be communicated with professional results. The combination of powerful Image Management capabilities with point-and-click simplicity provides an ideal solution for multiple users with various levels of expertise. An easy-to-use IA44 application wizard allows you to develop advanced applications from scratch or modify pre-existing applications. Save your image data or export to a Microsoft® Excel template for effective, boardroom-ready reports. For added convenience, the IA44's PAX-it™ 2 based software allows for easy image management functionality to save, organize, and easily find all images and related data.

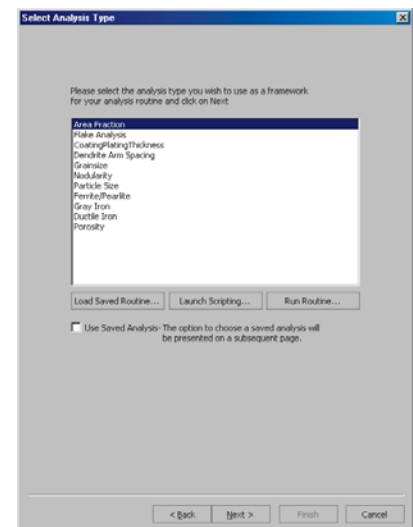


Features include:

- Simple operation
- A variety of customizable, application-specific toolbar buttons
- Comprehensive professional-grade software tools
- Easy-to-use application wizards



Sample data can be saved and organized within the IA44/PAX-it system with a familiar file cabinet layout. An optional CD creator module is available to save images and data outside your hard drive, while still keeping the IA44/PAX-it format for easy image/data retrieval.

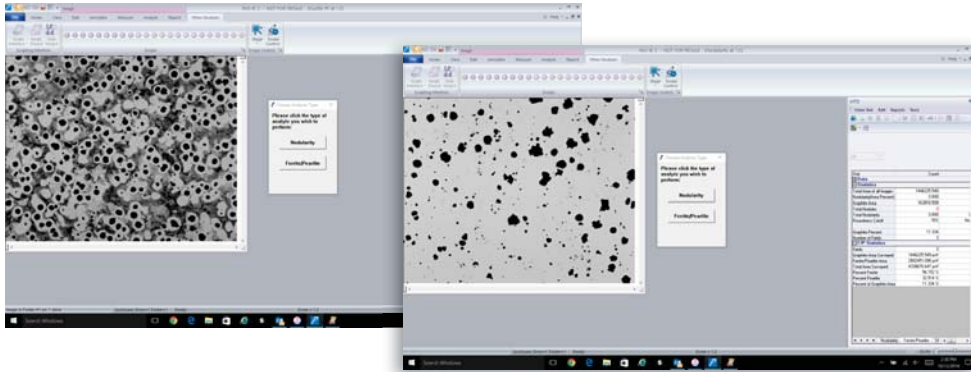


Users at every skill level can create their own applications using the IA44 application wizard.

Application Samples

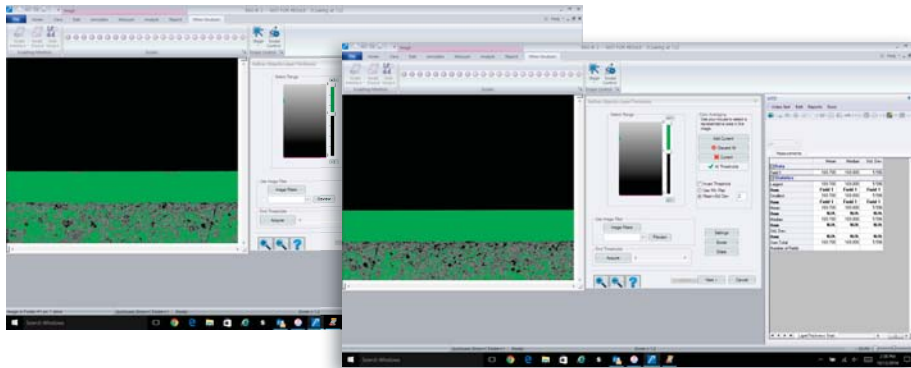
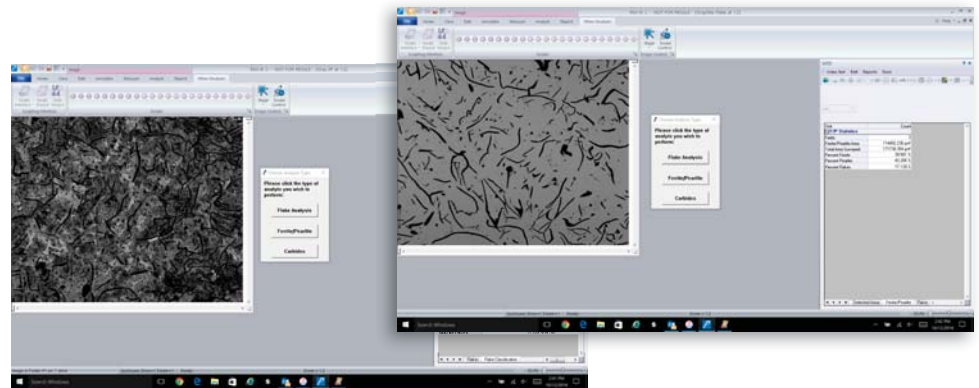
Just a few applications are highlighted below. Other applications include:

Porosity • Area Fractions • Particle Size • Dendrite Arm Spacing (DAS) • Pearlite/Ferrite • Cast Iron



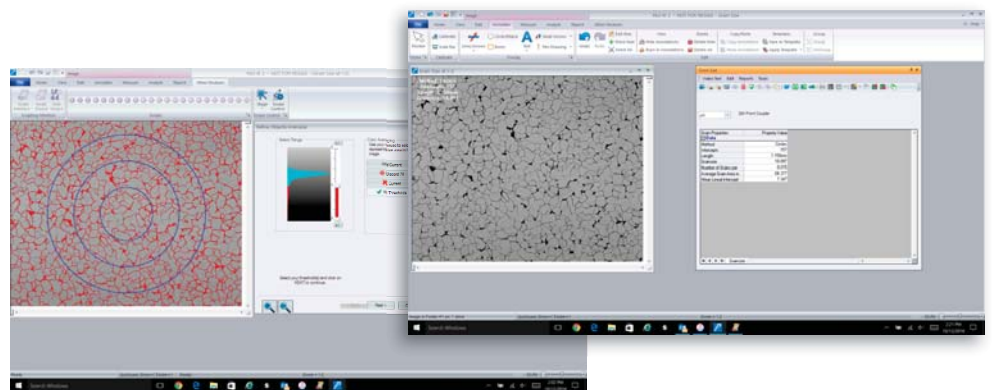
Ductile Iron— Nodularity is determined quickly and efficiently with a minimal level of effort and user involvement. Pearlite, Ferrite, and Carbides can also be included in one analysis.

Gray Iron—Graphite Flake is determined quickly and efficiently with a minimal level of effort. Pearlite, Ferrite, and Carbides can also be included in one analysis.



Coating Thickness— The screens to the left show how the coating thickness is determined by threshold method. The application will determine straight or curved coatings without manipulation.

Grain Size—Grain size can be determined according to ASTM E-1382. Other grain size methods are also available in the IA44.



Specifications and part numbers may change. Consult LECO for latest information.
PAX-it™ and PAXcam™ are trademarks of Midwest Information Systems, Inc.

3000 Lakeview Avenue | St. Joseph, MI 49085 | 800-292-6141 | Phone: 269-985-5496
info@leco.com | www.leco.com | ISO-9001:2008 • HQ-Q-994 | LECO is a registered trademark of LECO Corporation.